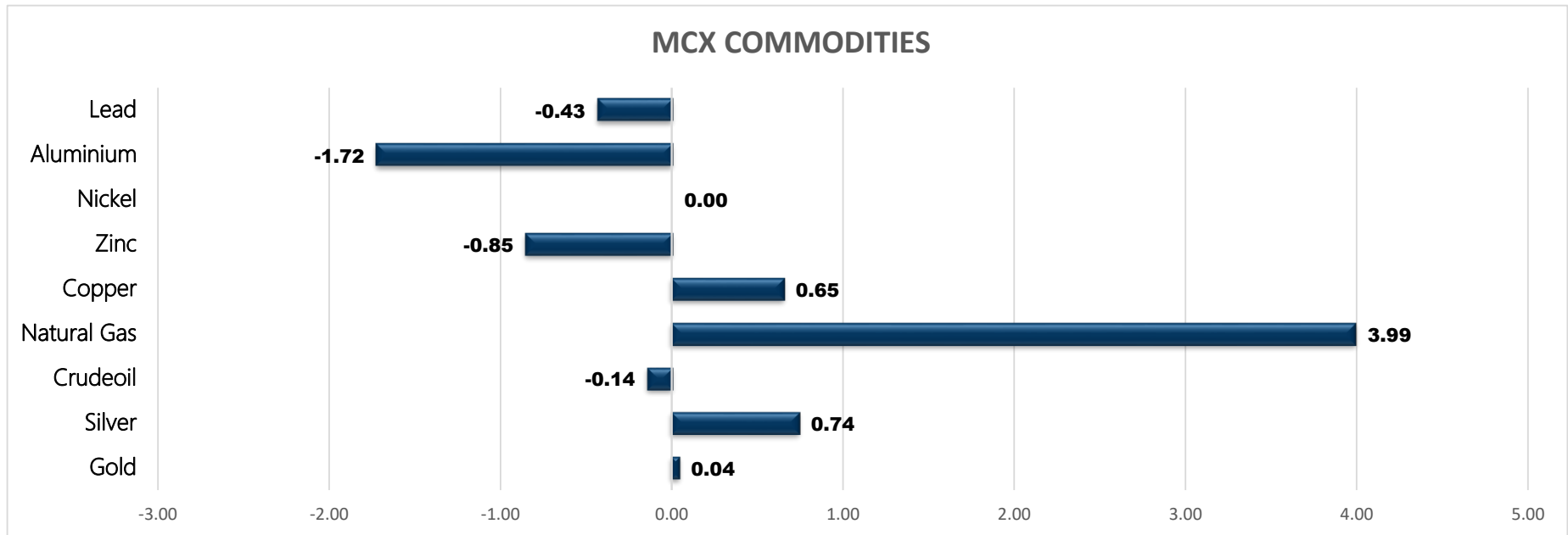




Basemetals

- Copper
- Zinc
- Nickel
- Lead
- Aluminium

Commodity	Close	% Change	Commodity	Ltp*	% Change	Economical Data
Gold	50865.00	0.04	Gold\$	1846.11	0.01	EUR Spanish Unemployment Change
Silver	61580.00	0.74	Silver\$	21.81	0.01	EUR PPI m/m
Crudeoil	9013.00	-0.14	Crudeoil\$	115.26	0.51	All OPEC-JMMC Meetings
Natural Gas	674.90	3.99	Natural Gas\$	8.70	6.76	USD Challenger Job Cuts y/y
Copper	779.65	0.65	Lme Copper	9520.00	0.86	USD ADP Non-Farm Employment Chang
Zinc	330.80	-0.85	Lme Zinc	3872.50	-1.04	USD Unemployment Claims
Nickel	2304.00	0.00	Lme Nickel	28270.00	-0.09	USD Revised Nonfarm Productivity q/q
Aluminium	231.25	-1.72	Lme Lead	2155.00	-1.15	USD Revised Unit Labor Costs q/q
Lead	183.55	-0.43	Lme Aluminium	2724.00	-2.33	USD Factory Orders m/m



MCX MARKET SYNOPSIS

Contract	Open	High	Low	Close	Rs Chg	% Chg	Volume	OI	OI % Chg
Copper Jun	774.30	780.65	770.05	779.65	5.05	0.65	7917	3659	-6.25
Copper Jul	775.00	780.45	771.00	779.35	4.35	0.56	217	353	8.95
Zinc Jun	332.80	334.80	329.00	330.80	-2.85	-0.85	4379	1192	-15.52
Zinc Jul	330.50	333.60	328.20	329.70	-2.45	-0.74	133	62	226.32
Nickel Jun	0.00	0.00	0.00	2304.00	0.00	0.00	0	4	0.00
Nickel Jul	0.00	0.00	0.00	2304.00	0.00	0.00	0	0	0.00
Aluminium Jun	235.70	237.40	230.20	231.25	-4.05	-1.72	6041	3180	4.23
Aluminium Jul	237.50	238.00	231.35	232.30	-4.70	-1.98	295	158	143.08
Lead Jun	184.40	184.40	183.00	183.55	-0.80	-0.43	759	701	-6.66
Lead Jul	183.60	183.60	182.85	183.25	-0.50	-0.27	10	15	25.00

MCX PIVOT

Contract	Sup - 3	Sup - 2	Sup - 1	Pivot	Res - 1	Res - 2	Res - 3	OI Status
Copper Jun	762.40	766.20	773.00	776.80	783.60	787.40	794.20	Short Covering
Zinc Jun	322.40	325.70	328.20	331.50	334.00	337.30	339.80	Long Liquidation
Nickel Jun	1536.00	768.00	1536.00	768.00	1536.00	768.00	1536.00	Long Liquidation
Aluminium Jun	221.40	225.80	228.60	233.00	235.80	240.20	243.00	Fresh Selling
Lead Jun	181.60	182.30	183.00	183.70	184.40	185.10	185.80	Long Liquidation

INTERNATIONAL MARKET SYNOPSIS

Commodity	Open	High	Low	Ltp*	Chg	% Chg	LME STOCKS	
LME Copper	9523.50	9591.50	9429.00	9439.00	81.00	0.86	LME Copper	-3250
LME Zinc	3910.50	3963.50	3883.50	3913.00	-40.50	-1.04	LME Zinc	-1100
LME Nickel	29000.00	29400.00	28195.00	28295.00	-25.00	-0.09	LME Nickel	-246
LME Lead	2183.50	2192.50	2165.50	2180.00	-25.00	-1.15	LME Lead	-50
LME Aluminium	2885.00	2896.50	2783.00	2789.00	-65.00	-2.33	LME Aluminium	-5000

INTERNATIONAL PIVOT

Commodity	Sup - 3	Sup - 2	Sup - 1	Pivot	Res - 1	Res - 2	Res - 3
LME Copper	9219	9324	9382	9487	9544	9649	9707
LME Zinc	3797	3840	3877	3920	3957	4000	4037
LME Nickel	26655	27425	27860	28630	29065	29835	30270
LME Lead	2139	2152	2166	2179	2193	2206	2220
LME Aluminium	2636	2709	2749	2823	2863	2936	2976

COPPER

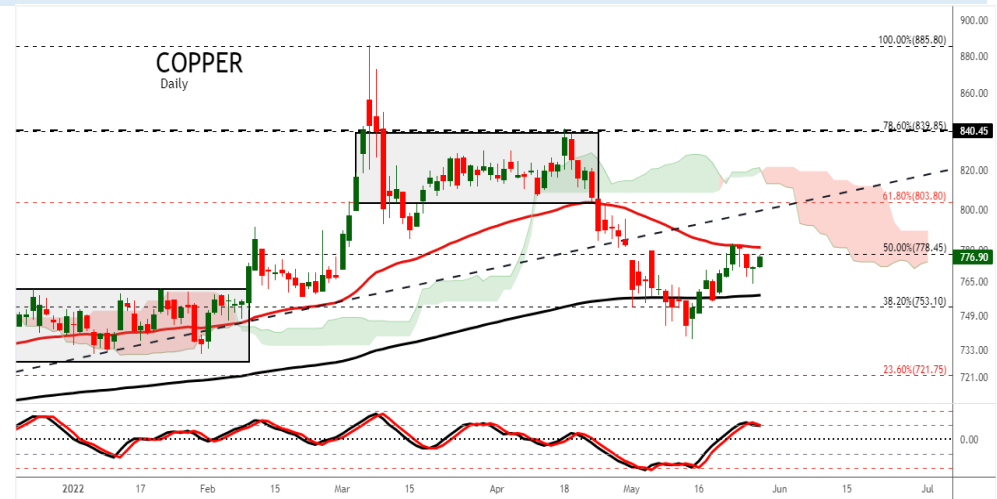
Copper trading range for the day is 766.2-787.4.

Copper prices gains as optimism about Shanghai coming out of lockdown supported prices while lingering concerns over a global economic slowdown limited upside.

China's factories struggled in May with the official manufacturing managers index showing contraction for a third month.

Blaze at Peru's Las Bambas copper mine as tension rises

Warehouse stock for Copper at LME was at 145950mt that is down by -3250mt.



ZINC

Zinc trading range for the day is 325.7-337.3.

Zinc prices dropped as the US dollar index rebounded, while domestic demand failed to pick up significantly as of now.

LME zinc inventory fell by 1,100 mt, warehouse in Singapore contributing the highest decrease

China a net exporter of zinc for the first time since 2014

Warehouse stock for Zinc at LME was at 83575mt that is down by -1100mt.



NICKEL

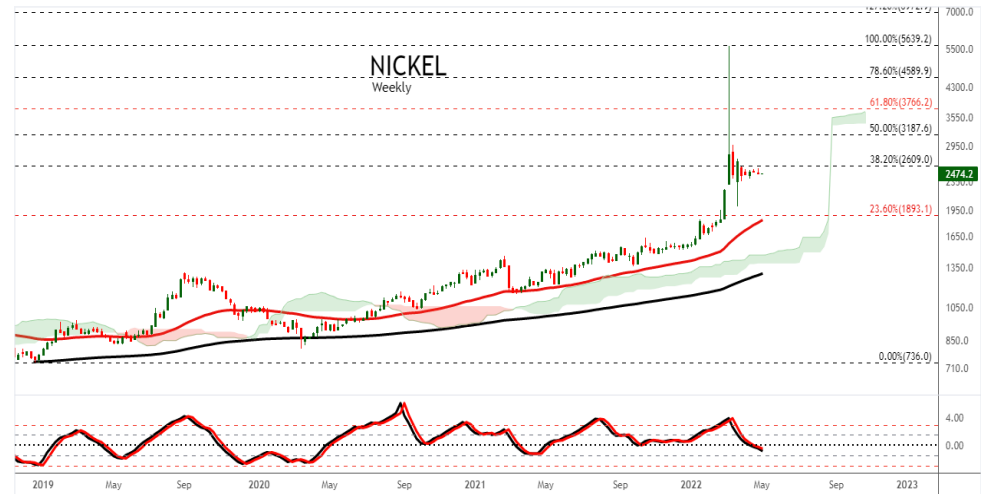
Nickel trading range for the day is 768-768.

Nickel settled flat as Sumitomo Metal sees global nickel demand for battery use at 410,000 in 2022

Global nickel market sees surplus in February – INSG

Nickel briquette prices stood above 200,000 yuan/mt, and demand from nickel sulphate plants may contract.

Warehouse stock for Nickel at LME was at 71472mt that is down by -246mt.



ALUMINIUM

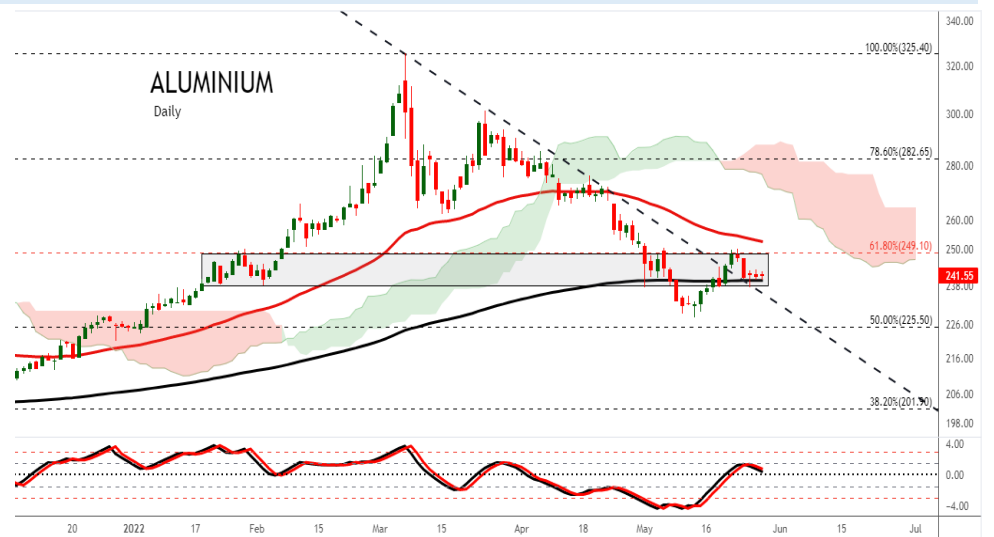
Aluminium trading range for the day is 225.8-240.2.

Aluminium prices dropped as China's factory activity falls at slower pace on easing curbs

Asia's factory activity slows in May as China COVID curbs weigh

Manufacturing growth in the euro zone slowed last month as factories faced supply shortages, high prices and a fall in demand

Warehouse stock for Aluminium at LME was at 453875mt that is down by -5000mt.



COPPER PRICE MOVEMENT SINCE 2014

Year	JAN	FEB	MAR	APR	MAY	JUN	JUL	AUG	SEP	OCT	NOV	DEC	Growth
2014	444.95	443.20	404.15	403.00	410.80	422.35	436.10	417.95	416.00	414.70	390.75	399.10	-69.45
	-5.04	-0.39	-8.81	-0.28	1.94	2.81	3.26	-4.16	-0.47	-0.31	-5.78	2.14	-14.82
2015	342.85	371.80	378.45	404.60	386.65	368.75	335.40	341.75	342.70	336.55	301.15	315.50	-83.60
	-14.09	8.44	1.79	6.91	-4.44	-4.63	-9.04	1.89	0.28	-1.79	-10.52	4.77	-20.95
2016	311.60	322.00	321.25	334.20	312.50	327.15	329.70	305.60	328.55	326.05	396.05	372.90	57.40
	-1.24	3.34	-0.23	4.03	-6.49	4.69	0.78	-7.31	7.51	-0.76	21.47	-5.85	18.19
2017	406.10	397.85	380.75	367.60	368.75	385.20	410.65	434.55	427.95	444.70	431.40	466.00	93.10
	8.90	-2.03	-4.30	-3.45	0.31	4.46	6.61	5.82	-1.52	3.91	-2.99	8.02	24.97
2018	450.90	446.00	436.80	449.40	457.05	446.15	430.15	414.00	452.95	435.70	433.10	407.75	-58.25
	-3.24	-1.09	-2.06	2.88	1.70	-2.38	-3.59	-3.75	9.41	-3.81	-0.60	-5.85	-12.50
2019	437.60	464.70	451.05	450.30	404.50	411.05	444.15	443.95	438.05	437.95	432.60	441.25	33.50
	7.32	6.19	-2.94	-0.17	-10.17	1.62	8.05	-0.05	-1.33	-0.02	-1.22	2.00	8.22
2020	427.25	421.80	376.80	403.45	416.20	464.70	500.75	527.30	525.20	526.40	582.30	594.70	153.45
	-3.17	-1.28	-10.67	7.07	3.16	11.65	7.76	5.30	-0.40	0.23	10.62	2.13	34.78
2021	596.40	702.95	667.95	754.10	768.85	721.50	751.70	720.95	697.80	745.10	725.30	748.90	154.20
	0.29	17.87	-4.98	12.90	1.96	-6.16	4.19	-4.09	-3.21	6.78	-2.66	3.25	25.93
2022	736.25	767.50	821.45	782.85	774.60								25.70
	-1.69	4.24	7.03	-4.70	-1.05								3.43
Average	-0.91	2.77	-2.16	1.90	-0.91	1.27	2.01	0.96	1.00	-0.36	1.05	1.77	Average

ZINC PRICE MOVEMENT SINCE 2014

Year	JAN	FEB	MAR	APR	MAY	JUN	JUL	AUG	SEP	OCT	NOV	DEC	Growth
2014	122.80	130.95	119.05	123.95	122.40	132.45	144.55	142.90	141.10	143.40	138.00	137.20	8.15
	-4.84	6.64	-9.09	4.12	-1.25	8.21	9.14	-1.14	-1.26	1.63	-3.77	-0.58	6.32
2015	130.40	127.70	129.90	149.75	141.05	127.10	122.85	121.30	108.90	109.10	103.20	106.15	-31.05
	-4.96	-2.07	1.72	15.28	-5.81	-9.89	-3.34	-1.26	-10.22	0.18	-5.41	2.86	-22.63
2016	109.25	122.45	118.40	129.20	129.30	142.15	148.80	155.90	158.10	163.90	185.55	173.80	67.65
	2.92	12.08	-3.31	9.12	0.08	9.94	4.68	4.77	1.41	3.67	13.21	-6.33	63.73
2017	193.10	187.70	180.40	169.45	165.95	178.25	179.50	200.95	210.20	215.05	205.95	207.60	33.80
	11.10	-2.80	-3.89	-6.07	-2.07	7.41	0.70	11.95	4.60	2.31	-4.23	0.80	19.45
2018	228.60	227.75	214.10	211.75	209.05	202.15	180.40	176.10	186.65	192.60	180.20	171.95	-35.65
	10.12	-0.37	-5.99	-1.10	-1.28	-3.30	-10.76	-2.38	5.99	3.19	-6.44	-4.58	-17.17
2019	195.15	197.80	221.35	223.20	203.00	200.50	192.25	185.30	185.55	187.85	185.05	179.00	7.05
	13.49	1.36	11.91	0.84	-9.05	-1.23	-4.11	-3.62	0.13	1.24	-1.49	-3.27	4.10
2020	174.45	154.85	145.50	150.60	159.00	163.50	184.00	196.05	190.80	201.80	220.20	214.40	35.40
	-2.54	-11.24	-6.04	3.51	5.58	2.83	12.54	6.55	-2.68	5.77	9.12	-2.63	19.78
2021	205.90	219.55	220.00	232.45	237.35	240.20	248.15	244.80	252.10	287.05	270.50	287.95	73.55
	-3.96	6.63	0.20	5.66	2.11	1.20	3.31	-1.35	2.98	13.86	-5.77	6.45	34.31
2022	295.85	304.10	344.50	343.60	333.65								45.70
	2.74	2.79	13.29	-0.26	-2.90								15.87
Average	3.05	0.81	-0.88	3.87	-1.67	1.54	1.13	2.81	0.26	2.21	0.47	0.48	Average

NICKEL PRICE MOVEMENT SINCE 2014

Year	JAN	FEB	MAR	APR	MAY	JUN	JUL	AUG	SEP	OCT	NOV	DEC	Growth
2014	855.80	902.80	945.50	1097.40	1139.60	1124.30	1130.40	1140.30	1016.80	971.00	996.80	945.70	81.20
	-1.01	5.49	4.73	16.07	3.85	-1.34	0.54	0.88	-10.83	-4.50	2.66	-5.13	9.49
2015	922.90	874.90	779.70	881.00	808.00	744.50	698.50	668.10	661.90	660.90	583.50	582.00	-363.70
	-2.41	-5.20	-10.88	12.99	-8.29	-7.86	-6.18	-4.35	-0.93	-0.15	-11.71	-0.26	-38.46
2016	579.80	577.60	549.10	629.10	568.50	636.40	700.00	651.20	703.30	696.30	751.20	706.00	169.20
	-0.38	-0.38	-4.93	14.57	-9.63	11.94	9.99	-6.97	8.00	-1.00	7.88	-6.02	29.07
2017	670.30	725.30	640.10	608.90	568.50	600.60	655.70	743.70	692.60	766.30	727.50	783.40	77.40
	-5.06	8.21	-11.75	-4.87	-6.63	5.65	9.17	13.42	-6.87	10.64	-5.06	7.68	10.96
2018	863.10	898.30	840.50	926.40	1024.40	1022.30	944.00	909.30	905.00	860.00	774.80	741.60	-41.80
	10.17	4.08	-6.43	10.22	10.58	-0.20	-7.66	-3.68	-0.47	-4.97	-9.91	-4.28	-5.34
2019	884.90	931.10	904.00	854.60	876.50	906.00	1013.50	1245.40	1216.80	1200.40	1005.50	1029.20	287.60
	19.32	5.22	-2.91	-5.46	2.56	3.37	11.87	22.88	-2.30	-1.35	-16.24	2.36	38.78
2020	943.80	901.00	860.10	922.60	940.40	975.00	1041.90	1135.70	1065.30	1142.70	1206.70	1212.20	183.00
	-8.30	-4.53	-4.54	7.27	1.93	3.68	6.86	9.00	-6.20	7.27	5.60	0.46	17.78
2021	1286.90	1367.70	1184.10	1316.90	1328.40	1363.90	1484.10	1446.00	1384.50	1520.50	1541.20	1569.60	357.40
	6.16	6.28	-13.42	11.22	0.87	2.67	8.81	-2.57	-4.25	9.82	1.36	1.84	29.48
2022	1689.80	1852.50	2410.00	2474.20	2304.00								734.40
	7.66	9.63	30.09	2.66	-6.88								46.79
Average	3.33	1.19	-2.00	5.01	-1.15	1.88	2.95	3.96	-1.95	0.81	-2.56	0.04	Average

ALUMINIUM PRICE MOVEMENT SINCE 2014

Year	JAN	FEB	MAR	APR	MAY	JUN	JUL	AUG	SEP	OCT	NOV	DEC	Growth
2014	103.90	107.00	104.00	106.75	107.65	111.20	121.45	126.70	119.20	126.85	128.35	116.00	6.80
	-4.85	2.98	-2.80	2.64	0.84	3.30	9.22	4.32	-5.92	6.42	1.18	-9.62	6.23
2015	113.45	112.40	111.95	121.40	108.75	104.95	102.00	107.15	102.60	94.40	96.35	100.15	-15.85
	-2.20	-0.93	-0.40	8.44	-10.42	-3.49	-2.81	5.05	-4.25	-7.99	2.07	3.94	-13.66
2016	103.80	111.25	98.90	111.25	104.00	110.55	108.30	107.20	110.55	115.95	118.00	117.20	17.05
	3.64	7.18	-11.10	12.49	-6.52	6.30	-2.04	-1.02	3.12	4.88	1.77	-0.68	17.02
2017	123.40	126.45	126.20	123.90	123.90	123.55	121.95	135.30	137.90	138.60	131.00	143.30	26.10
	5.29	2.47	-0.20	-1.82	0.00	-0.28	-1.30	10.95	1.92	0.51	-5.48	9.39	22.27
2018	141.65	140.50	130.65	148.50	154.15	149.70	141.40	150.10	145.90	143.95	137.20	128.15	-15.15
	-1.15	-0.81	-7.01	13.66	3.80	-2.89	-5.54	6.15	-2.80	-1.34	-4.69	-6.60	-10.57
2019	136.00	151.10	149.15	146.20	145.35	143.20	140.35	138.70	134.60	132.00	133.55	137.25	9.10
	6.13	11.10	-1.29	-1.98	-0.58	-1.48	-1.99	-1.18	-2.96	-1.93	1.17	2.77	7.10
2020	139.10	136.70	134.45	131.00	131.70	137.95	140.90	146.15	143.80	152.95	167.05	160.95	23.70
	1.35	-1.73	-1.65	-2.57	0.53	4.75	2.14	3.73	-1.61	6.36	9.22	-3.65	17.27
2021	162.25	173.50	176.65	193.70	196.65	198.75	206.75	212.85	227.15	221.30	211.20	225.25	64.30
	0.81	6.93	1.82	9.65	1.52	1.07	4.03	2.95	6.72	-2.58	-4.56	6.65	39.95
2022	241.55	273.45	281.95	252.90	235.30								10.05
	7.24	13.21	3.11	-10.30	-6.96								4.46
Average	1.82	3.29	-2.27	2.41	-0.81	0.13	0.09	4.54	-0.54	-0.44	0.68	0.31	Average

GENERAL DISCLAIMERS

KEDIA ADVISORY

This Report is prepared and distributed by Kedia Stocks & Commodities Research Pvt Ltd. for information purposes only. The recommendations, if any, made herein are expression of views and/or opinions and should not be deemed or construed to be neither advice for the purpose of purchase or sale through KSCRPL nor any solicitation or offering of any investment /trading opportunity. These information / opinions / views are not meant to serve as a professional investment guide for the readers. No action is solicited based upon the information provided herein. Recipients of this Report should rely on information/data arising out of their own investigations. Readers are advised to seek independent professional advice and arrive at an informed trading/investment decision before executing any trades or making any investments. This Report has been prepared on the basis of publicly available information, internally developed data and other sources believed by KSCRPL to be reliable. KSCRPL or its directors, employees, affiliates or representatives do not assume any responsibility for, or warrant the accuracy, completeness, adequacy and reliability of such information / opinions / views. While due care has been taken to ensure that the disclosures and opinions given are fair and reasonable, none of the directors, employees, affiliates or representatives of KSCRPL shall be liable for any direct, indirect, special, incidental, consequential, punitive or exemplary damages, including lost profits arising in any way whatsoever from the information / opinions / views contained in this Report. The possession, circulation and/or distribution of this Report may be restricted or regulated in certain jurisdictions by appropriate laws. No action has been or will be taken by KSCRPL in any jurisdiction (other than India), where any action for such purpose(s) is required. Accordingly, this Report shall not be possessed, circulated and/ or distributed in any such country or jurisdiction unless such action is in compliance with all applicable laws and regulations of such country or jurisdiction. KSCRPL requires such recipient to inform himself about and to observe any restrictions at his own expense, without any liability to KSCRPL. Any dispute arising out of this Report shall be subject to the exclusive jurisdiction of the Courts in India.

For more details, please **contact**:

 +91 9323406035 / 9619551022

 info@kediaadvisory.com

 www.kediaadvisory.com

KEDIA STOCKS & COMMODITIES RESEARCH PVT LTD.
Mumbai, IN.

SEBI REGISTRATION NUMBER - INH000006156

